



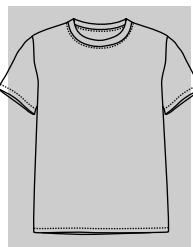
# 100544U

Veste « bomber » - unisexe - coupe semi-ajustée  
 Bomber jacket - unisex - semi-fitted cut



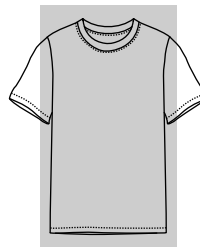
MESURES / MEASUREMENT	TOLERANCE		XS		S		M		L		XL		2XL		3XL		4XL		5XL	
	(CM)	pouces / inches	(CM)	pouces / inches	(CM)	pouces / inches	(CM)	pouces / inches	(CM)	pouces / inches	(CM)	pouces / inches	(CM)	pouces / inches	(CM)	pouces / inches	(CM)	pouces / inches	(CM)	pouces / inches
A LONGUEUR TOTAL / TOTAL LENGTH	1.5	5/8	67.5	26 1/2	68.0	26 1/2	70.5	27 1/2	71.0	28	73.5	29	74.0	29	76.5	30	77.1	30 1/2	77.5	30 1/2
B POITRINE / CHEST	1.5	5/8	50.0	19 1/2	54.0	21	58.0	23	62.0	24 1/2	66.0	26	71.0	28	76.0	30	81.0	32	86.0	34
C LONGUEUR DE MANCHE / SLEEVE LENGTH	1.5	5/8	88.5	35	91.5	36	94.5	37	97.0	38	99.0	39	100.0	39 1/2	101.5	40	103.0	40 1/2	104.5	41

## RELAXED FIT



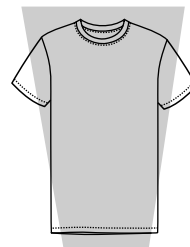
COUPE DÉCONTRACTÉE

## CLASSIC FIT



COUPE CLASSIQUE

## SEMI-FITTED



COUPE SEMI-AJUSTÉE